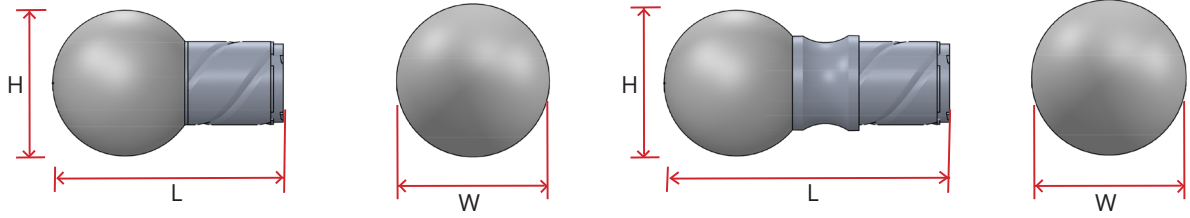


Acrylic Sphere Finial with Extension Dimensions

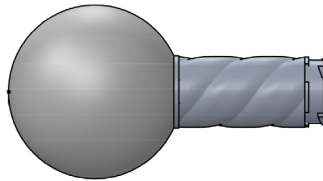
As part of the Revolve program, several finial options are offered in both finish matched aluminum as well as acrylic, with the acrylic options available with or without a ferrule. Finials attach to a finial extension, which then slots into the bracket for a seamless yet functional design.



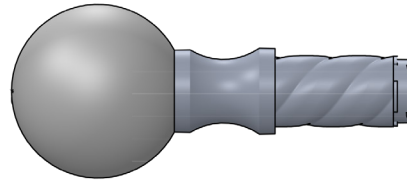
DIMENSIONS

1.125" ROD

Width	2.75"
Height	2.75"
Length	5.01"



without Ferrule

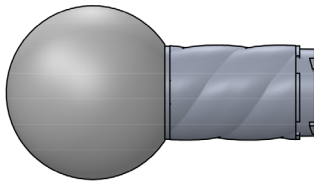


with Ferrule

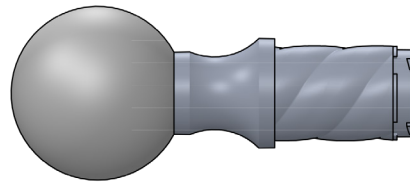
Width	2.75"
Height	2.75"
Length	6.37"

1.5" ROD

Width	2.75"
Height	2.75"
Length	5.01"



without Ferrule

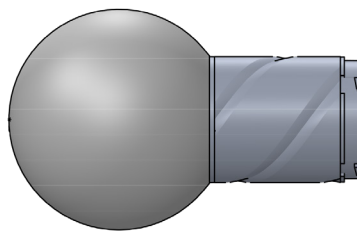


with Ferrule

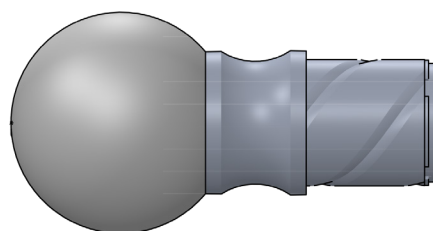
Width	2.75"
Height	2.75"
Length	6.37"

2.0" ROD

Width	3.50"
Height	3.50"
Length	5.57"



without Ferrule



with Ferrule

Width	3.50"
Height	3.50"
Length	6.87"