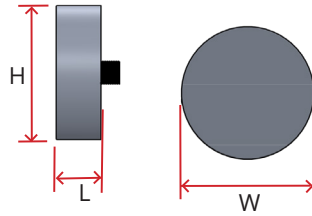


End Cap Finial Dimensions

As part of the Revolve program, several finial options are offered in both finish matched aluminum as well as acrylic, with the acrylic options available with or without a ferrule. Finials attach to a finial extension, which then slots into the bracket for a seamless yet functional design.



DIMENSIONS

2.86cm ROD

Width	3.5cm
Height	3.5cm
Length	1.91cm



3.81cm ROD

Width	4.45cm
Height	4.45cm
Length	1.91cm



5.08cm ROD

Width	6.99cm
Height	6.99cm
Length	1.905 cm

