

PIN RIPPLE | SINGLE TRACK

LENGTH UP TO (INCHES)	WIFI HARDWIRED	WIFI	HARDWIRE	ZIGBEE*	FM*	MOTORIZEABLE	MANUAL ASSIST	MANUAL
48	\$994	\$966	\$819	\$767	\$697	\$407	\$267	\$256
60	\$1,022	\$994	\$847	\$795	\$725	\$438	\$298	\$284
72	\$1,050	\$1,022	\$875	\$823	\$753	\$468	\$328	\$312
84	\$1,082	\$1,054	\$907	\$854	\$784	\$506	\$366	\$347
96	\$1,110	\$1,082	\$935	\$882	\$812	\$537	\$397	\$375
108	\$1,138	\$1,110	\$963	\$910	\$840	\$564	\$424	\$399
120	\$1,166	\$1,138	\$991	\$938	\$868	\$602	\$462	\$434
132	\$1,194	\$1,166	\$1,019	\$966	\$896	\$633	\$493	\$462
144	\$1,225	\$1,197	\$1,050	\$998	\$928	\$671	\$531	\$497
156	\$1,253	\$1,225	\$1,078	\$1,026	\$956	\$698	\$558	\$522
168	\$1,281	\$1,253	\$1,106	\$1,054	\$984	\$729	\$589	\$550
180	\$1,313	\$1,285	\$1,138	\$1,085	\$1,015	\$767	\$627	\$585
192	\$1,341	\$1,313	\$1,166	\$1,113	\$1,043	\$797	\$657	\$613
204	\$1,372	\$1,344	\$1,197	\$1,145	\$1,075	\$832	\$692	\$644
216	\$1,404	\$1,376	\$1,229	\$1,176	\$1,106	\$866	\$726	\$676
228	\$1,432	\$1,404	\$1,257	\$1,204	\$1,134	\$900	\$760	\$707
240	\$1,460	\$1,432	\$1,285	\$1,232	\$1,162	\$935	\$795	\$739
252	\$1,488	\$1,460	\$1,313	\$1,260	\$1,190	\$969	\$829	\$770
264	\$1,519	\$1,491	\$1,344	\$1,292	\$1,222	\$996	\$856	\$795
276	\$1,547	\$1,519	\$1,372	\$1,320	\$1,250	\$1,030	\$890	\$826
288	\$1,575	\$1,547	\$1,400	\$1,348	\$1,278	\$1,061	\$921	\$854
300	\$1,610	\$1,575	\$1,428	\$1,376	\$1,306	\$1,092	\$952	\$882
312	\$1,635	\$1,607	\$1,460	\$1,407	\$1,337	\$1,130	\$990	\$917
324	\$1,663	\$1,635	\$1,488	\$1,435	\$1,365	\$1,161	\$1,021	\$945
336	\$1,691	\$1,663	\$1,516	\$1,463	\$1,393	\$1,195	\$1,055	\$977
348	\$1,719	\$1,691	\$1,544	\$1,491	\$1,421	\$1,226	\$1,086	\$1,005
360	\$1,750	\$1,722	\$1,575	\$1,523	\$1,453	\$1,257	\$1,117	\$1,033
372	\$1,782	\$1,754	\$1,607	\$1,554	\$1,484	\$1,294	\$1,154	\$1,068
384	\$1,810	\$1,782	\$1,635	\$1,582	\$1,512	\$1,325	\$1,185	\$1,096
396	\$1,834	\$1,806	\$1,659	\$1,607	\$1,537	\$1,356	\$1,216	\$1,124
408	\$1,866	\$1,838	\$1,691	\$1,638	\$1,568	\$1,390	\$1,250	\$1,155
420	\$1,894	\$1,866	\$1,719	\$1,666	\$1,596	\$1,421	\$1,281	\$1,183
432	\$1,925	\$1,897	\$1,750	\$1,698	\$1,628	\$1,459	\$1,319	\$1,218

*Includes motor and power supply.

Hardwire over CAT5 / CAT6 units available as Pendantless or with Dead Weight Pendant. Power and Communications Panel sold separately.

PIN RIPPLE | DUAL TRACK

LENGTH UP TO (INCHES)	WIFI HARDWIRED	WIFI	HARDWIRE	ZIGBEE*	FM*	MOTORIZEABLE	MANUAL ASSIST	MANUAL
48	\$1,264	\$1,236	\$1,211	\$1,159	\$1,089	\$813	\$533	\$511
60	\$1,320	\$1,292	\$1,267	\$1,215	\$1,145	\$875	\$595	\$567
72	\$1,376	\$1,348	\$1,323	\$1,271	\$1,201	\$937	\$657	\$623
84	\$1,439	\$1,411	\$1,386	\$1,334	\$1,264	\$1,009	\$729	\$690
96	\$1,495	\$1,467	\$1,442	\$1,390	\$1,320	\$1,070	\$790	\$746
108	\$1,551	\$1,523	\$1,498	\$1,446	\$1,376	\$1,132	\$852	\$802
120	\$1,610	\$1,582	\$1,558	\$1,505	\$1,435	\$1,204	\$924	\$868
132	\$1,666	\$1,638	\$1,614	\$1,561	\$1,491	\$1,266	\$986	\$924
144	\$1,729	\$1,701	\$1,677	\$1,624	\$1,554	\$1,338	\$1,058	\$991
156	\$1,785	\$1,757	\$1,733	\$1,680	\$1,610	\$1,399	\$1,119	\$1,047
168	\$1,841	\$1,813	\$1,789	\$1,736	\$1,666	\$1,461	\$1,181	\$1,103
180	\$1,901	\$1,873	\$1,848	\$1,796	\$1,726	\$1,533	\$1,253	\$1,169
192	\$1,957	\$1,929	\$1,904	\$1,852	\$1,782	\$1,595	\$1,315	\$1,225
204	\$2,023	\$1,995	\$1,971	\$1,918	\$1,848	\$1,663	\$1,383	\$1,288
216	\$2,083	\$2,055	\$2,030	\$1,978	\$1,908	\$1,735	\$1,455	\$1,355
228	\$2,139	\$2,111	\$2,086	\$2,034	\$1,964	\$1,797	\$1,517	\$1,411
240	\$2,202	\$2,174	\$2,149	\$2,097	\$2,027	\$1,869	\$1,589	\$1,477
252	\$2,258	\$2,230	\$2,205	\$2,153	\$2,083	\$1,931	\$1,651	\$1,533
264	\$2,314	\$2,286	\$2,261	\$2,209	\$2,139	\$1,992	\$1,712	\$1,589
276	\$2,373	\$2,345	\$2,321	\$2,268	\$2,198	\$2,064	\$1,784	\$1,656
288	\$2,429	\$2,401	\$2,377	\$2,324	\$2,254	\$2,126	\$1,846	\$1,712
300	\$2,485	\$2,457	\$2,433	\$2,380	\$2,310	\$2,188	\$1,908	\$1,768
312	\$2,548	\$2,520	\$2,496	\$2,443	\$2,373	\$2,260	\$1,980	\$1,834
324	\$2,601	\$2,573	\$2,548	\$2,496	\$2,426	\$2,321	\$2,041	\$1,890
336	\$2,664	\$2,636	\$2,611	\$2,559	\$2,489	\$2,390	\$2,110	\$1,953
348	\$2,720	\$2,692	\$2,667	\$2,615	\$2,545	\$2,451	\$2,171	\$2,009
360	\$2,776	\$2,748	\$2,723	\$2,671	\$2,601	\$2,517	\$2,237	\$2,069
372	\$2,835	\$2,807	\$2,783	\$2,730	\$2,660	\$2,585	\$2,305	\$2,132
384	\$2,891	\$2,863	\$2,839	\$2,786	\$2,716	\$2,647	\$2,367	\$2,188
396	\$2,947	\$2,919	\$2,895	\$2,842	\$2,772	\$2,708	\$2,428	\$2,244
408	\$3,010	\$2,982	\$2,958	\$2,905	\$2,835	\$2,780	\$2,500	\$2,310
420	\$3,066	\$3,038	\$3,014	\$2,961	\$2,891	\$2,842	\$2,562	\$2,366
432	\$3,126	\$3,098	\$3,073	\$3,021	\$2,951	\$2,914	\$2,634	\$2,433

*Includes motor and power supply.

Hardwire over CAT5 / CAT6 units available as Pendantless or with Dead Weight Pendant. Power and Communications Panel sold separately.

PINCH PLEAT | SINGLE TRACK

LENGTH UP TO (INCHES)	WIFI HARDWIRED	WIFI	HARDWIRE	ZIGBEE*	FM*	MOTORIZEABLE	MANUAL ASSIST	MANUAL
48	\$994	\$966	\$819	\$767	\$697	\$407	\$267	\$256
60	\$1,022	\$994	\$847	\$795	\$725	\$438	\$298	\$284
72	\$1,050	\$1,022	\$875	\$823	\$753	\$468	\$328	\$312
84	\$1,082	\$1,054	\$907	\$854	\$784	\$506	\$366	\$347
96	\$1,110	\$1,082	\$935	\$882	\$812	\$537	\$397	\$375
108	\$1,138	\$1,110	\$963	\$910	\$840	\$564	\$424	\$399
120	\$1,166	\$1,138	\$991	\$938	\$868	\$602	\$462	\$434
132	\$1,194	\$1,166	\$1,019	\$966	\$896	\$633	\$493	\$462
144	\$1,225	\$1,197	\$1,050	\$998	\$928	\$671	\$531	\$497
156	\$1,253	\$1,225	\$1,078	\$1,026	\$956	\$698	\$558	\$522
168	\$1,281	\$1,253	\$1,106	\$1,054	\$984	\$729	\$589	\$550
180	\$1,313	\$1,285	\$1,138	\$1,085	\$1,015	\$767	\$627	\$585
192	\$1,341	\$1,313	\$1,166	\$1,113	\$1,043	\$797	\$657	\$613
204	\$1,372	\$1,344	\$1,197	\$1,145	\$1,075	\$832	\$692	\$644
216	\$1,404	\$1,376	\$1,229	\$1,176	\$1,106	\$866	\$726	\$676
228	\$1,432	\$1,404	\$1,257	\$1,204	\$1,134	\$900	\$760	\$707
240	\$1,460	\$1,432	\$1,285	\$1,232	\$1,162	\$935	\$795	\$739
252	\$1,488	\$1,460	\$1,313	\$1,260	\$1,190	\$969	\$829	\$770
264	\$1,519	\$1,491	\$1,344	\$1,292	\$1,222	\$996	\$856	\$795
276	\$1,547	\$1,519	\$1,372	\$1,320	\$1,250	\$1,030	\$890	\$826
288	\$1,575	\$1,547	\$1,400	\$1,348	\$1,278	\$1,061	\$921	\$854
300	\$1,610	\$1,575	\$1,428	\$1,376	\$1,306	\$1,092	\$952	\$882
312	\$1,635	\$1,607	\$1,460	\$1,407	\$1,337	\$1,130	\$990	\$917
324	\$1,663	\$1,635	\$1,488	\$1,435	\$1,365	\$1,161	\$1,021	\$945
336	\$1,691	\$1,663	\$1,516	\$1,463	\$1,393	\$1,195	\$1,055	\$977
348	\$1,719	\$1,691	\$1,544	\$1,491	\$1,421	\$1,226	\$1,086	\$1,005
360	\$1,750	\$1,722	\$1,575	\$1,523	\$1,453	\$1,257	\$1,117	\$1,033
372	\$1,782	\$1,754	\$1,607	\$1,554	\$1,484	\$1,294	\$1,154	\$1,068
384	\$1,810	\$1,782	\$1,635	\$1,582	\$1,512	\$1,325	\$1,185	\$1,096
396	\$1,834	\$1,806	\$1,659	\$1,607	\$1,537	\$1,356	\$1,216	\$1,124
408	\$1,866	\$1,838	\$1,691	\$1,638	\$1,568	\$1,390	\$1,250	\$1,155
420	\$1,894	\$1,866	\$1,719	\$1,666	\$1,596	\$1,421	\$1,281	\$1,183
432	\$1,925	\$1,897	\$1,750	\$1,698	\$1,628	\$1,459	\$1,319	\$1,218

*Includes motor and power supply.

Hardwire over CAT5 / CAT6 units available as Pendantless or with Dead Weight Pendant. Power and Communications Panel sold separately.

PINCH PLEAT | DUAL TRACK

LENGTH UP TO (INCHES)	WIFI HARDWIRED	WIFI	HARDWIRE	ZIGBEE*	FM*	MOTORIZEABLE	MANUAL ASSIST	MANUAL
48	\$1,211	\$1,183	\$1,159	\$1,106	\$1,036	\$719	\$439	\$417
60	\$1,243	\$1,215	\$1,190	\$1,138	\$1,068	\$756	\$476	\$448
72	\$1,274	\$1,246	\$1,222	\$1,169	\$1,099	\$793	\$513	\$480
84	\$1,309	\$1,281	\$1,257	\$1,204	\$1,134	\$841	\$561	\$522
96	\$1,341	\$1,313	\$1,288	\$1,236	\$1,166	\$878	\$598	\$553
108	\$1,372	\$1,344	\$1,320	\$1,267	\$1,197	\$915	\$635	\$585
120	\$1,411	\$1,383	\$1,358	\$1,306	\$1,236	\$963	\$683	\$627
132	\$1,442	\$1,414	\$1,390	\$1,337	\$1,267	\$1,000	\$720	\$658
144	\$1,477	\$1,449	\$1,425	\$1,372	\$1,302	\$1,047	\$767	\$700
156	\$1,509	\$1,481	\$1,456	\$1,404	\$1,334	\$1,084	\$804	\$732
168	\$1,540	\$1,512	\$1,488	\$1,435	\$1,365	\$1,121	\$841	\$763
180	\$1,575	\$1,547	\$1,523	\$1,470	\$1,400	\$1,166	\$886	\$802
192	\$1,586	\$1,558	\$1,554	\$1,502	\$1,411	\$1,210	\$930	\$840
204	\$1,649	\$1,621	\$1,596	\$1,544	\$1,474	\$1,250	\$970	\$875
216	\$1,687	\$1,659	\$1,635	\$1,582	\$1,512	\$1,298	\$1,018	\$917
228	\$1,715	\$1,687	\$1,663	\$1,610	\$1,540	\$1,335	\$1,055	\$949
240	\$1,754	\$1,726	\$1,701	\$1,649	\$1,579	\$1,383	\$1,103	\$991
252	\$1,785	\$1,757	\$1,733	\$1,680	\$1,610	\$1,416	\$1,136	\$1,019
264	\$1,817	\$1,789	\$1,764	\$1,712	\$1,642	\$1,457	\$1,177	\$1,054
276	\$1,852	\$1,824	\$1,799	\$1,747	\$1,677	\$1,501	\$1,221	\$1,092
288	\$1,883	\$1,855	\$1,831	\$1,778	\$1,708	\$1,541	\$1,261	\$1,127
300	\$1,915	\$1,887	\$1,862	\$1,810	\$1,740	\$1,575	\$1,295	\$1,155
312	\$1,953	\$1,925	\$1,901	\$1,848	\$1,778	\$1,623	\$1,343	\$1,197
324	\$1,981	\$1,953	\$1,929	\$1,876	\$1,806	\$1,660	\$1,380	\$1,229
336	\$2,020	\$1,992	\$1,967	\$1,915	\$1,845	\$1,707	\$1,427	\$1,271
348	\$2,048	\$2,020	\$1,995	\$1,943	\$1,873	\$1,744	\$1,464	\$1,302
360	\$2,083	\$2,055	\$2,030	\$1,978	\$1,908	\$1,782	\$1,502	\$1,334
372	\$2,118	\$2,090	\$2,065	\$2,013	\$1,943	\$1,829	\$1,549	\$1,376
384	\$2,149	\$2,121	\$2,097	\$2,044	\$1,974	\$1,866	\$1,586	\$1,407
396	\$2,181	\$2,153	\$2,128	\$2,076	\$2,006	\$1,903	\$1,623	\$1,439
408	\$2,219	\$2,191	\$2,167	\$2,114	\$2,044	\$1,947	\$1,667	\$1,477
420	\$2,247	\$2,219	\$2,195	\$2,142	\$2,072	\$1,985	\$1,705	\$1,509
432	\$2,286	\$2,258	\$2,233	\$2,181	\$2,111	\$2,032	\$1,752	\$1,551

*Includes motor and power supply.

Hardwire over CAT5 / CAT6 units available as Pendantless or with Dead Weight Pendant. Power and Communications Panel sold separately.

RIPPLEFOLD | SINGLE TRACK

LENGTH UP TO (INCHES)	WIFI HARDWIRED	WIFI	HARDWIRE	ZIGBEE*	FM*	MOTORIZEABLE	MANUAL ASSIST	MANUAL
48	\$907	\$879	\$854	\$802	\$732	\$421	\$281	\$270
60	\$935	\$907	\$882	\$830	\$760	\$452	\$312	\$298
72	\$966	\$938	\$914	\$861	\$791	\$486	\$346	\$329
84	\$998	\$970	\$945	\$893	\$823	\$524	\$384	\$364
96	\$1,026	\$998	\$973	\$921	\$851	\$554	\$414	\$392
108	\$1,057	\$1,029	\$1,005	\$952	\$882	\$589	\$449	\$424
120	\$1,089	\$1,061	\$1,036	\$984	\$914	\$627	\$487	\$459
132	\$1,117	\$1,089	\$1,064	\$1,012	\$942	\$657	\$517	\$487
144	\$1,148	\$1,120	\$1,096	\$1,043	\$973	\$695	\$555	\$522
156	\$1,180	\$1,152	\$1,127	\$1,075	\$1,005	\$726	\$586	\$550
168	\$1,208	\$1,180	\$1,155	\$1,103	\$1,033	\$760	\$620	\$581
180	\$1,239	\$1,211	\$1,187	\$1,134	\$1,064	\$795	\$655	\$613
192	\$1,271	\$1,243	\$1,218	\$1,166	\$1,096	\$829	\$689	\$644
204	\$1,306	\$1,278	\$1,253	\$1,201	\$1,131	\$867	\$727	\$679
216	\$1,309	\$1,281	\$1,257	\$1,204	\$1,134	\$904	\$764	\$714
228	\$1,365	\$1,337	\$1,313	\$1,260	\$1,190	\$935	\$795	\$742
240	\$1,397	\$1,369	\$1,344	\$1,292	\$1,222	\$973	\$833	\$777
252	\$1,428	\$1,400	\$1,376	\$1,323	\$1,253	\$1,007	\$867	\$809
264	\$1,460	\$1,432	\$1,407	\$1,355	\$1,285	\$1,038	\$898	\$837
276	\$1,488	\$1,460	\$1,435	\$1,383	\$1,313	\$1,076	\$936	\$872
288	\$1,519	\$1,491	\$1,467	\$1,414	\$1,344	\$1,107	\$967	\$900
300	\$1,547	\$1,519	\$1,495	\$1,442	\$1,372	\$1,141	\$1,001	\$931
312	\$1,579	\$1,551	\$1,526	\$1,474	\$1,404	\$1,175	\$1,035	\$963
324	\$2,100	\$1,582	\$1,558	\$1,505	\$1,435	\$1,210	\$1,070	\$994
336	\$1,642	\$1,614	\$1,589	\$1,537	\$1,467	\$1,247	\$1,107	\$1,029
348	\$1,670	\$1,642	\$1,617	\$1,565	\$1,495	\$1,278	\$1,138	\$1,057
360	\$1,701	\$1,673	\$1,649	\$1,596	\$1,526	\$1,313	\$1,173	\$1,089
372	\$1,733	\$1,705	\$1,680	\$1,628	\$1,558	\$1,350	\$1,210	\$1,124
384	\$1,761	\$1,733	\$1,708	\$1,656	\$1,586	\$1,381	\$1,241	\$1,152
396	\$1,792	\$1,764	\$1,740	\$1,687	\$1,617	\$1,412	\$1,272	\$1,180
408	\$1,827	\$1,799	\$1,775	\$1,722	\$1,652	\$1,450	\$1,310	\$1,215
420	\$1,852	\$1,824	\$1,799	\$1,747	\$1,677	\$1,484	\$1,344	\$1,246
432	\$1,887	\$1,859	\$1,834	\$1,782	\$1,712	\$1,522	\$1,382	\$1,281

*Includes motor and power supply.

Hardwire over CAT5 / CAT6 units available as Pendantless or with Dead Weight Pendant. Power and Communications Panel sold separately.

RIPPLEFOLD | DUAL TRACK

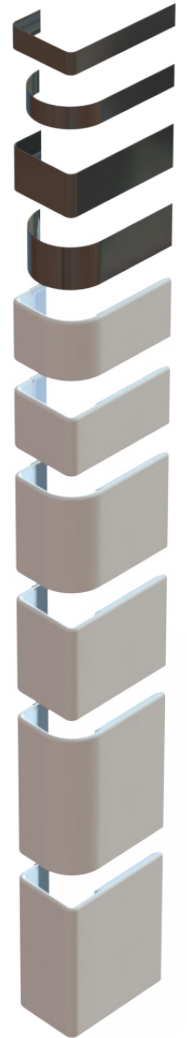
LENGTH UP TO TO (INCHES)	WIFI HARDWIRED	WIFI	HARDWIRE	ZIGBEE*	FM*	MOTORIZEABLE	MANUAL ASSIST	MANUAL
48	\$1,320	\$1,292	\$1,267	\$1,215	\$1,145	\$841	\$561	\$539
60	\$1,379	\$1,351	\$1,327	\$1,274	\$1,204	\$907	\$627	\$599
72	\$1,439	\$1,411	\$1,386	\$1,334	\$1,264	\$972	\$692	\$658
84	\$1,502	\$1,474	\$1,449	\$1,397	\$1,327	\$1,091	\$811	\$772
96	\$1,561	\$1,533	\$1,509	\$1,456	\$1,386	\$1,109	\$829	\$784
108	\$1,621	\$1,593	\$1,568	\$1,516	\$1,446	\$1,174	\$894	\$844
120	\$1,687	\$1,659	\$1,635	\$1,582	\$1,512	\$1,250	\$970	\$914
132	\$1,743	\$1,715	\$1,691	\$1,638	\$1,568	\$1,315	\$1,035	\$973
144	\$1,810	\$1,782	\$1,757	\$1,705	\$1,635	\$1,390	\$1,110	\$1,043
156	\$1,866	\$1,838	\$1,813	\$1,761	\$1,691	\$1,455	\$1,175	\$1,103
168	\$1,925	\$1,897	\$1,873	\$1,820	\$1,750	\$1,517	\$1,237	\$1,159
180	\$1,988	\$1,960	\$1,995	\$1,883	\$1,813	\$1,593	\$1,313	\$1,229
192	\$2,048	\$2,020	\$2,065	\$1,943	\$1,873	\$1,658	\$1,378	\$1,288
204	\$2,118	\$2,090	\$2,128	\$2,013	\$1,943	\$1,730	\$1,450	\$1,355
216	\$2,181	\$2,153	\$2,188	\$2,076	\$2,006	\$1,805	\$1,525	\$1,425
228	\$2,240	\$2,212	\$2,251	\$2,135	\$2,065	\$1,870	\$1,590	\$1,484
240	\$2,303	\$2,275	\$2,310	\$2,198	\$2,128	\$1,946	\$1,666	\$1,554
252	\$2,363	\$2,335	\$2,433	\$2,258	\$2,188	\$2,011	\$1,731	\$1,614
264	\$2,426	\$2,398	\$2,496	\$2,321	\$2,251	\$2,076	\$1,796	\$1,673
276	\$2,485	\$2,457	\$2,552	\$2,380	\$2,310	\$2,152	\$1,872	\$1,743
288	\$2,548	\$2,520	\$2,618	\$2,443	\$2,373	\$2,217	\$1,937	\$1,803
300	\$2,604	\$2,576	\$2,674	\$2,499	\$2,429	\$2,279	\$1,999	\$1,859
312	\$2,671	\$2,643	\$2,741	\$2,566	\$2,496	\$2,354	\$2,074	\$1,929
324	\$2,727	\$2,699	\$2,800	\$2,622	\$2,552	\$2,419	\$2,139	\$1,988
336	\$2,793	\$2,765	\$2,856	\$2,688	\$2,618	\$2,495	\$2,215	\$2,058
348	\$2,853	\$2,825	\$2,923	\$2,748	\$2,678	\$2,560	\$2,280	\$2,118
360	\$2,909	\$2,881	\$2,982	\$2,804	\$2,734	\$2,625	\$2,345	\$2,177
372	\$2,975	\$2,947	\$3,038	\$2,870	\$2,800	\$2,697	\$2,417	\$2,244
384	\$3,035	\$3,007	\$3,105	\$2,930	\$2,860	\$2,762	\$2,482	\$2,303
396	\$3,091	\$3,063	\$3,164	\$2,986	\$2,916	\$2,827	\$2,547	\$2,363
408	\$3,157	\$3,129	\$3,105	\$3,052	\$2,982	\$2,903	\$2,623	\$2,433
420	\$3,217	\$3,189	\$3,164	\$3,112	\$3,042	\$2,968	\$2,688	\$2,492
432	\$3,280	\$3,252	\$3,227	\$3,175	\$3,105	\$3,044	\$2,764	\$2,562

*Includes motor and power supply.

Hardwire over CAT5 / CAT6 units available as Pendantless or with Dead Weight Pendant. Power and Communications Panel sold separately.

FASCIA

LENGTH UP TO (INCHES)	1.5" ALUMINUM	3.0" ALUMINUM	4.0" FABRIC WRAPPED	7.0" FABRIC WRAPPED	11.0" FABRIC WRAPPED
48	\$100	\$110	\$155	\$180	\$225
60	\$105	\$120	\$160	\$185	\$240
72	\$115	\$125	\$165	\$190	\$255
84	\$120	\$135	\$170	\$195	\$275
96	\$125	\$145	\$175	\$200	\$285
108	\$135	\$155	\$185	\$210	\$305
120	\$140	\$160	\$195	\$220	\$320
132	\$145	\$170	\$200	\$230	\$335
144	\$150	\$175	\$210	\$240	\$350
156	\$160	\$185	\$220	\$250	\$365
168	\$165	\$195	\$225	\$260	\$385
180	\$175	\$200	\$235	\$270	\$400
192	\$180	\$210	\$245	\$280	\$415
204	\$185	\$220	\$250	\$290	\$430
216	\$190	\$225	\$260	\$300	\$445
228	\$200	\$235	\$270	\$310	\$465
240	\$205	\$245	\$275	\$325	\$475
252	\$215	\$255	\$285	\$335	\$495
264	\$220	\$260	\$295	\$345	\$510
276	\$225	\$270	\$300	\$355	\$525
288	\$230	\$280	\$310	\$365	\$540
300	\$240	\$285	\$320	\$375	\$560
312	\$245	\$295	\$325	\$385	\$575
324	\$250	\$300	\$335	\$395	\$590
336	\$260	\$310	\$345	\$405	\$605
348	\$265	\$320	\$355	\$415	\$620
360	\$270	\$330	\$360	\$425	\$635
372	\$280	\$340	\$370	\$435	\$655
384	\$285	\$345	\$375	\$445	\$670
396	\$290	\$355	\$385	\$455	\$685
408	\$300	\$360	\$395	\$465	\$700
420	\$305	\$370	\$400	\$475	\$715
432	\$310	\$380	\$410	\$485	\$730

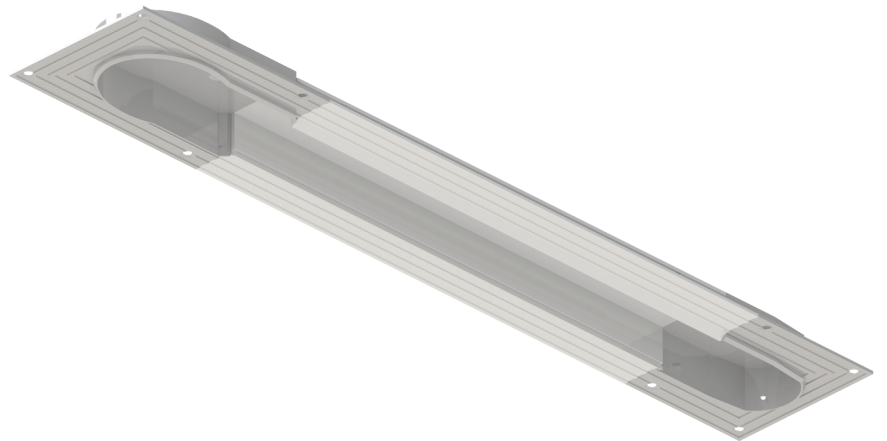
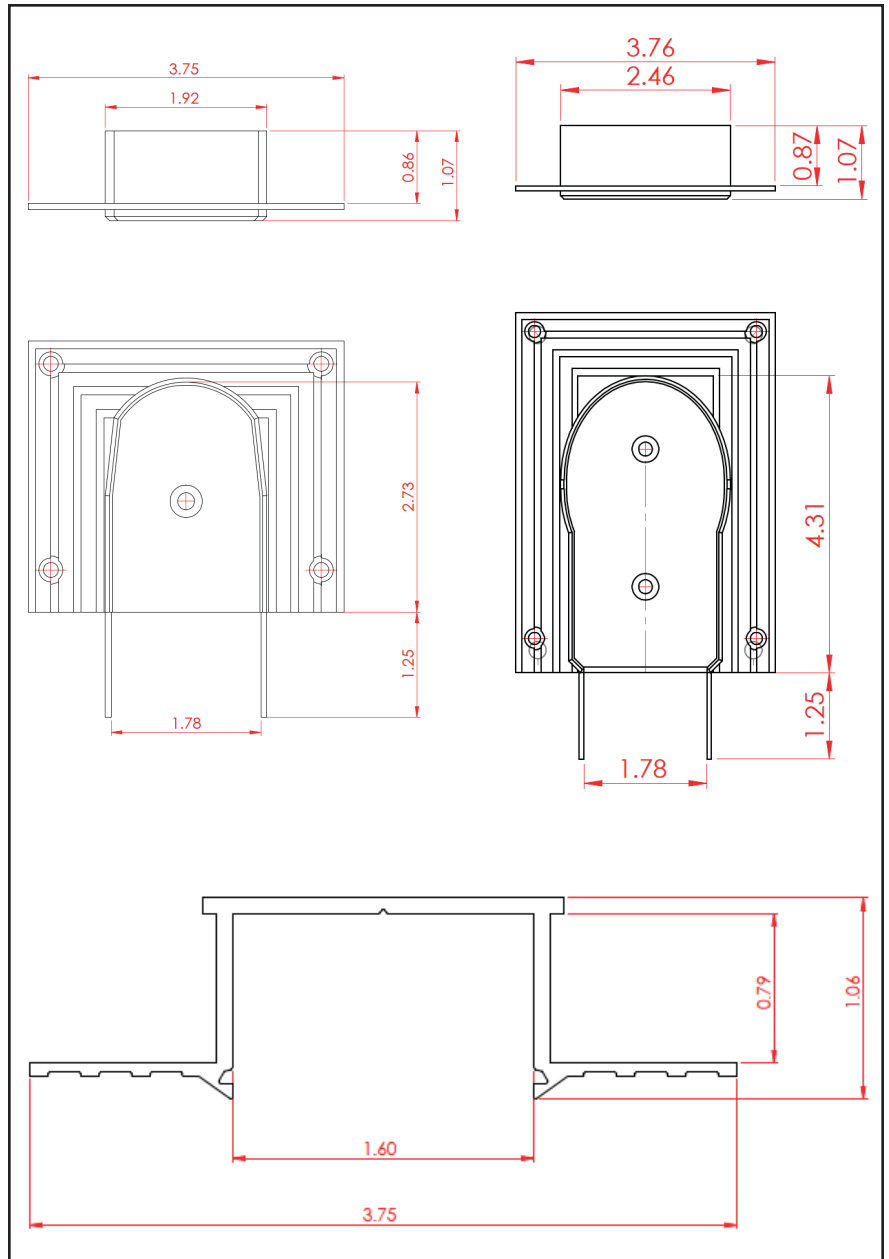


Aluminum fascia returns available in 90 degree bends, rounded, or straight.
Fabric Wrapped Fascia returns are bent in the field.

On fascia, you'll receive one fascia clip for every 24" of track length. On certain applications where you may be using your own fabric, please consider ordering and using additional fascia clips.

RECESSED POCKET EXTRUSION

LENGTH UP TO (INCHES)	SIDE DRAW	CENTER DRAW
48	\$570	\$700
60	\$580	\$710
72	\$585	\$720
84	\$595	\$730
96	\$600	\$735
108	\$610	\$745
120	\$620	\$755
132	\$630	\$765
144	\$640	\$770
156	\$650	\$780
168	\$655	\$790
180	\$665	\$800
192	\$675	\$805
204	\$680	\$815
216	\$690	\$820
228	\$700	\$830
240	\$710	\$840
252	\$720	\$850
264	\$725	\$860
276	\$735	\$870
288	\$740	\$875
300	\$750	\$885
312	\$760	\$895
324	\$770	\$900
336	\$780	\$910
348	\$785	\$920
360	\$795	\$930
372	\$805	\$940
384	\$810	\$945
396	\$820	\$955
408	\$830	\$965
420	\$840	\$970
432	\$845	\$980



SilenTrac ACCESSORIES





ACCESSORIES	PRICE	
HANDHELD REMOTE (FM OR ZIGBEE)	\$60	
POWER & COMMUNICATIONS PANEL	\$740	
STANDARD IU RACK FOR P&C PANEL	\$110	
STACKING PLATE SET FOR P&C PANEL	\$25	
SOLAR PANEL (FOR LI-ION)	\$60	
SENSOR BOX - FM*	\$350	
SENSOR BOX - ZIGBEE*	\$360	
CPC BRIDGE (ZIGBEE)**	\$300	
HARDWIRE WALL SWITCH	TBD	
DESKTOP CURRENT TOUCH REMOTE	\$300	
WALL MOUNT CURRENT TOUCH REMOTE	\$300	

* A sensor box is not included in the track price. If you'd like to add a sensor box please specify on your order and account for this additional charge in quoting.

** The CPC Bridge is only certified to work with products manufactured by Current Luxury.

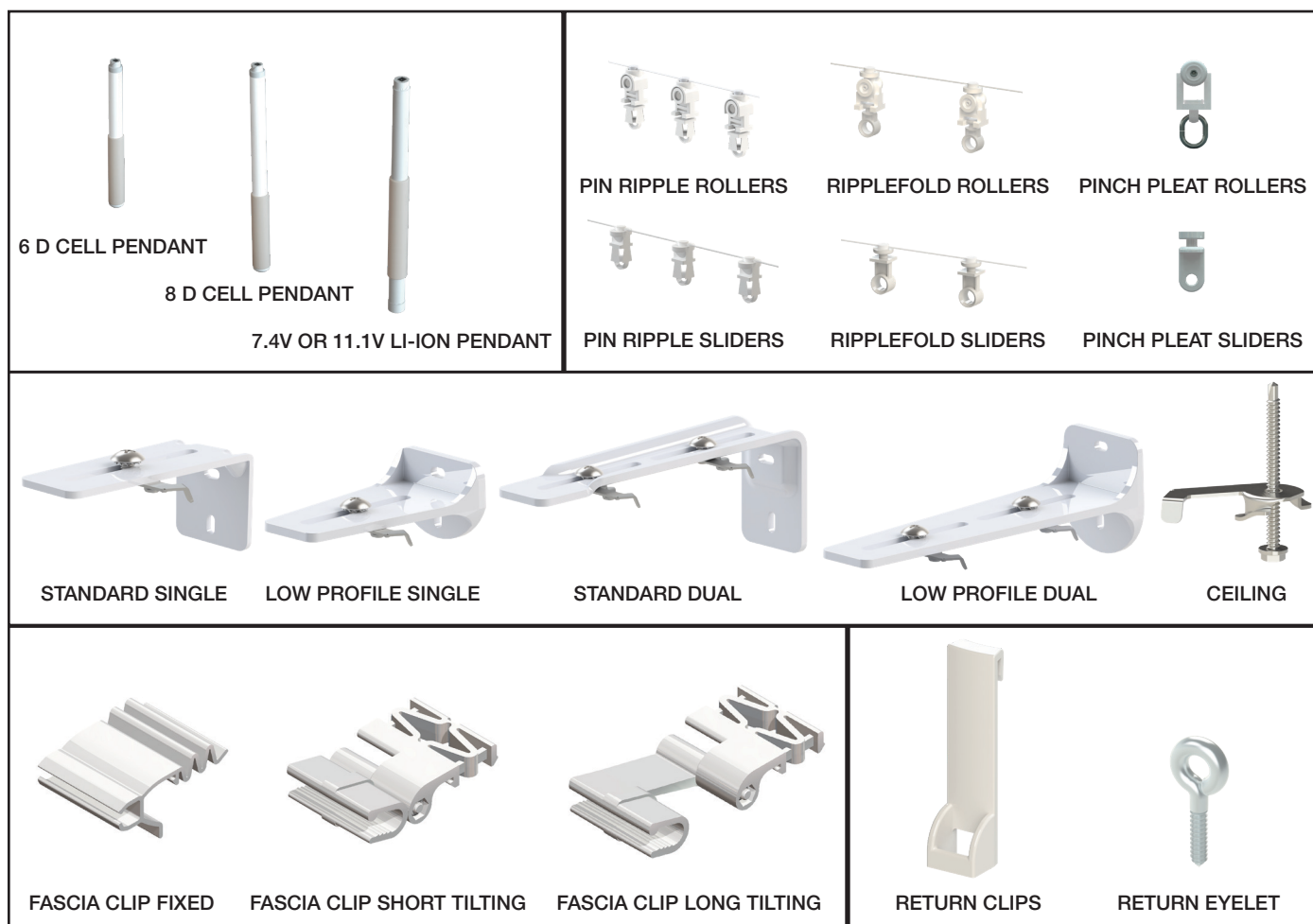
SilenTrac MOTORS

MOTORS	PRICE
PRIMARY MOTOR - FM RF	\$600
PRIMARY MOTOR - ZIGBEE RF	\$615
PRIMARY MOTOR - ZIGBEE HARDWIRE	\$690
SECONDARY MOTOR	\$320
SENSOR BOX - FM RF	\$350
SENSOR BOX - ZIGBEE RF	\$360
SENSOR BOX - ZIGBEE HARDWIRE	\$435

 <p>STANDARD SINGLE</p> <p>1 Primary Motor</p>	 <p>STANDARD DUAL</p> <p>1 Primary Motor and 1 Secondary Motor</p>	 <p>SINGLE WITH SENSORS</p> <p>1 Secondary Motor and 1 Sensor Box</p>	 <p>DUAL WITH SENSORS</p> <p>2 Secondary Motors and 1 Sensor Box</p>
--	--	--	--

EXTRAS

EXTRAS	PRICE
ALKALINE BATTERY PENDANT	\$100
LITHIUM ION BATTERY PENDANT	\$100
PIN RIPPLE ROLLER CARRIER STRING (PER FT)	\$25
PIN RIPPLE SLIDER CARRIER STRING (PER FT)	\$15
RIPPLEFOLD ROLLER CARRIER STRING (PER FT)	\$27
RIPPLEFOLD SLIDER CARRIER STRING (PER FT)	\$17
PINCH PLEAT SLIDER CARRIERS (4 PACK)	\$2
PINCH PLEAT ROLLER CARRIERS (4 PACK)	\$3
STANDARD SINGLE BRACKET	\$7
STANDARD DUAL BRACKET	\$15
LOW PROFILE SINGLE BRACKET	\$7
LOW PROFILE DUAL BRACKET	\$15
CEILING BRACKET	\$2
FASCIA CLIP FIXED	\$2
FASCIA CLIP SHORT TILTING	\$3
FASCIA CLIP LONG TILTING	\$4
RETURN CLIPS FOR MOTOR END (SET)	\$2
RETURN EYELET	\$0.50



INCLUSIONS

What you'll get.

We include the following number of brackets based on track length. If necessary based on your curtain weight or other installation requirements, please order additional brackets.

In addition to brackets, you'll receive two return clips and one return eyelet per motor end.

Motors and power supplies are included in the track price charts and will be specified during the order process.

TRACK LENGTH	# OF BRACKETS
Up to 30"	3
31" - 60"	4
61" - 90"	5
91" - 120"	6
121" - 150"	7
151" - 180"	8
181" - 210"	9
211" - 240"	10
241" - 270"	11
271" - 300"	12
301" - 330"	13
331" - 360"	14
360" - 396"	15
397" - 432"	16

For Pin Ripple or Ripplefold style curtains, the number of carriers in the track is dependent on the selected string spacing. Full charts are available in the SilenTrac Product Guide. If you need to replace the carrier string in an existing track, we suggest ordering slightly more than the track length worth of carrier string and cutting it down to size.

For Pinch Pleat style curtains, we include one carrier per every 4" of track length, plus two. For pleat spacing smaller than 4", please order additional carriers as necessary.

On fascia, you'll receive one fascia clip for every 24" of track length. On certain applications where you may be using your own fabric, please consider ordering and using additional fascia clips.

SHIPPING INFORMATION

When you need it, you need it.

We understand the importance of getting your order to you as quickly and cost effectively as possible, so we offer a three week lead time and ship FedEx 2-Day Ground in most cases. The shipping cost will be passed along dollar for dollar - **no upcharge from us** - and included on your sales confirmation so you'll be able to see and confirm that price before the order goes to production.

Have a track over 84" (but less than 216") and don't want it spliced? No problem. We'd be happy to do a quote for an LTL shipment.